



# Trench Inlet Measurement Sheet (TIMS) Instructions

for Channels, Trench Drains, or Horizontal Water Flow Drains with a Flat or Round Bottom Profile



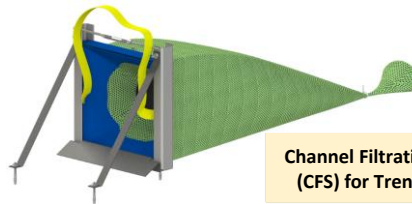
PLAN YOUR WORK. WORK YOUR PLAN

### Personal Protective Equipment

1. Steel toed shoes
2. Work gloves
3. Hi-viz vest
4. Traffic Cones
5. Knee pads
6. Face mask
7. Water to drink & wash hands

### Equipment for Measurement

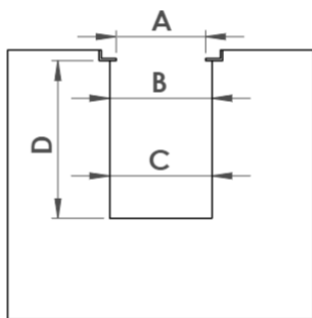
1. Measurement tape (metric preferred but imperial inches are OK)
2. Grate removal tool (a hay hook works most times)
3. Scraper & trash bag to clean frame shelf (hand trowel works well)
4. Camera (smart phone)
5. Measurement worksheet, clip board, pen
6. Map of grate locations



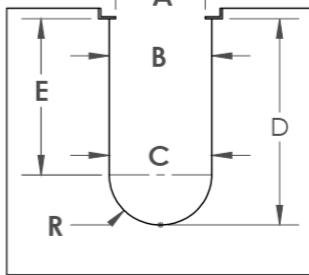
Channel Filtration System (CFS) for Trench Drains

ASK A BUDDY TO HELP YOU MEASURE AND RECORD THE INFORMATION BECAUSE IT'S SAFER, FASTER, AND FUNNER

### Flat Bottom Trench Drain



### Round Bottom Trench Drain



PLEASE PROVIDE MEASUREMENTS WITHIN 1/8" (3 mm) FOR BEST RESULTS

### Dimensions Required for a Quote:

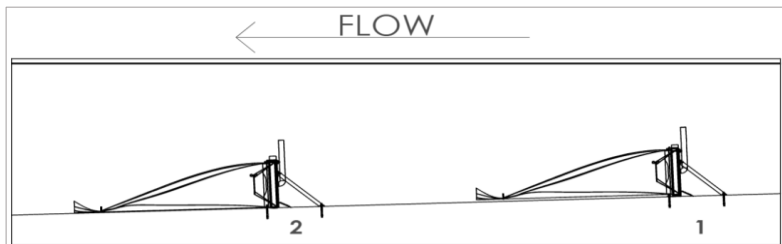
- A - Clear Opening (from grate lip to grate lip)
- B - Top Width of trench drain (top of trench below grate shelf)
- C - Bottom Width of trench drain (above radius of curve or flat bottom)
- D - Total Depth of trench drain (measured from grate lip)
- E - Depth to curvature - distance from grate shelf to beginning of radius in round bottomed trench drains.
- R - Radius of curve - measure if possible, otherwise we will calculate from C, D, and E dimensions

### Measurement Procedure

1. Safety first
2. Take a landmark picture
3. Remove storm grate
4. Clean the frame for accurate measurements
5. Obtain all necessary dimensions for quote or fulfillment
6. Use measurement sheet to record information
7. Take a top view and isometric view picture with grate off
8. Replace storm grate & remove equipment from area

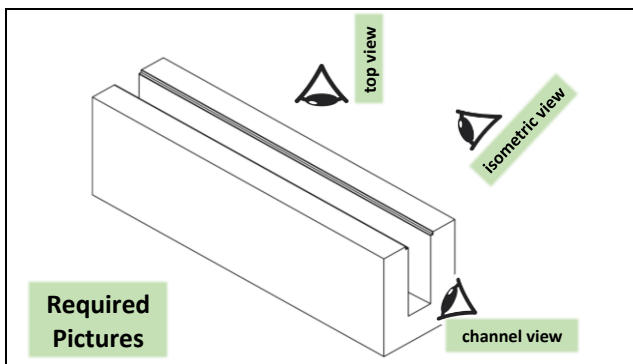
### Good Input = Good Output

Our Gutter Bins can fit a lot of different types of storm drain configurations, but there always seems that we find a unique one every now and then. We kindly ask that you take your time and retrieve the most accurate information possible about your stormwater network. Also, if you discover a better way for us to communicate with you, or improve our product, then please let us know. Thank you.



**Unit 2:** Secondary filter for industrial applications. Not req'd for normal filtrations (heavy metals & TSS)

**Unit 1:** Prefilter for industrial applications or single unit for normal filtration (gross pollutants & oil/greases)



Required Pictures

### Three Pictures

- Top view** (grate off): close up with entire frame in view
- Isometric** (grate off): take a stop back focus on
- Channel** (grate off): view straight down the channel

HELPFUL HINT: TAKE A PICTURE WITH A MEASUREMENT TAPE ACROSS THE OPEN STORM DRAIN. THIS HELPS PROVIDE SCALE

### Send us the info:

send scanned or electronic version to xxx recommend saving files something like this: State\_City\_Organization\_Catch Basin ID,

### Example

WY\_Casper\_FrogCreekPartners\_FrontShop\_1

### Special Notes for CFS Applications:

- Minimum trench drain width (C) = 5" (127mm)
- Minimum trench drain depth (D) = 6" (152mm)
- Maximum trench drain width = 12" (305mm) (*Custom units available*)
- Please make note of the type of the trench drain material (concrete, plastic, resin, steel, other). This will affect the means by which the CFS attaches to the drain (anchor bolts or glue).
- Industrial applications usually require two CFS units per treatment train. Distance between Unit 1 and Unit 2 frames should be 5 to 8 feet.

Please email completed forms to Frog Creek Partners at [sales@frogcreek.partners](mailto:sales@frogcreek.partners), or send to 800 W. Yellowstone Hwy, Casper, WY 82601 USA [www.frogcreek.partners](http://www.frogcreek.partners) Phone: (307) 797-7720

© 2020 Frog Creek Partners, LLC, All rights reserved, the Gutter Bin® stormwater filtration system and Mundus Bag® water filter are patent pending and patented (US 10,724,224)



# Trench Inlet Measurement Sheet (TIMS)

for Channels, Trench Drains, or Horizontal Water Flow Drains with a Flat or Round Bottom Profile



CLIENT CONTACT INFORMATION			
Organization:			
Job Name:			
Job Address:		City/State/Zip:	
Contact Name:			
Email:		Phone:	

Associated PO#: \_\_\_\_\_

Sheet: \_\_\_\_ of \_\_\_\_

**Client Classification:**  
 Municipal  
 Industrial  
 Construction  
 Commercial  
 Sponsor  
 \_\_\_\_\_

**Unit of Measure**  
 Inches (imperial)  
 Millimeters (metric)

**Requested Result:**  
 Prepare an estimate  
 Build & fulfill order

PLEASE PROVIDE MEASUREMENTS WITHIN 1/8" (3 mm) AND COMPLETE THIS WORKSHEET AS THOROUGHLY AS POSSIBLE FOR BEST RESULTS. Thank you!									
Catch Basin/Trench Drain ID for (# or location)	Info Required for Quote						Additional Info Required for Order Fulfillment		
	Clear Opening	Top Width of Channel	Bottom Width (above radius)	Total Depth	Depth to Curvature	Radius of curve for round bottom (if present)	Channel Material (concrete, plastic, metal, other)	Number units per location? (1 or 2)	Three Pictures <input type="checkbox"/> Top view <input type="checkbox"/> Isometric <input type="checkbox"/> Channel
	A	B	C	D	E	R			T <input type="checkbox"/> I <input type="checkbox"/> C <input type="checkbox"/>
1.									T <input type="checkbox"/> I <input type="checkbox"/> C <input type="checkbox"/>
2.									T <input type="checkbox"/> I <input type="checkbox"/> C <input type="checkbox"/>
3.									T <input type="checkbox"/> I <input type="checkbox"/> C <input type="checkbox"/>
4.									T <input type="checkbox"/> I <input type="checkbox"/> C <input type="checkbox"/>
5.									T <input type="checkbox"/> I <input type="checkbox"/> C <input type="checkbox"/>

<b>PICTURES IN ORDER OF PRIORITY:</b> Please take these three (3) pictures of each catch basin in order of priority: 1. Top view with grate removed & clear view of the walls and bottom of channel 2. Isometric view: an angled view from the top and side 3. Channel View: a picture from within the channel looking up or downstream	We can provide an electronic worksheet to make it easier for larger orders	<b>SPECIAL NOTE ON OBSTRUCTIONS AND MEASUREMENTS:</b> If any obstructions or protrusions exist within the channel (trench drain), please provide photos and accurate measurements to ensure proper product selection and fulfillment. Submittal of this form represents that the customer acknowledges that all details provided are accurate, and that any issues resulting from inaccurate information herein are the responsibility of the customer or client.
---	--	--

<b>NOTES:</b>	<b>Type of Stormwater Pollution:</b> <i>(Check all that apply)</i> <input type="checkbox"/> Trash (5mm in size or greater) <input type="checkbox"/> Sediment <input type="checkbox"/> Oils & Grease (hydrocarbons) <input type="checkbox"/> Heavy metals
---------------	---