



MUNDUS BAG® WATER FILTER Measurement, Install & Operating MIOP Manual

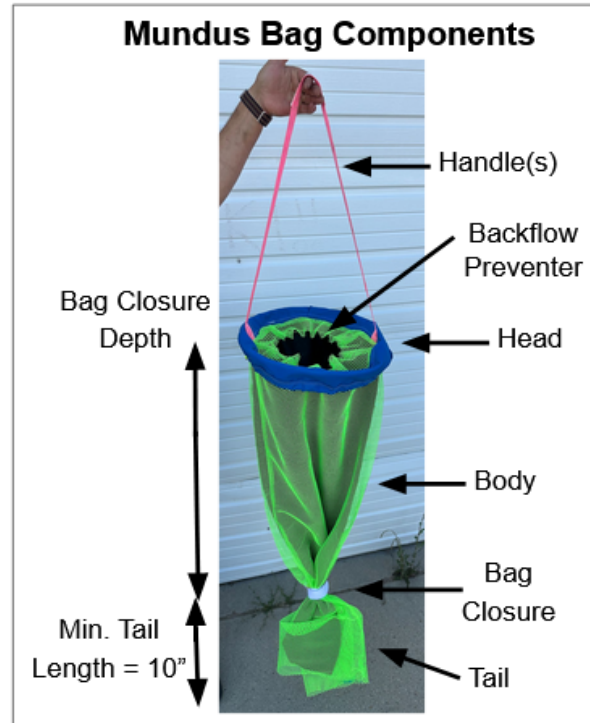
INTRODUCTION

Thank you for purchasing the Mundus Bag® water filter for the Gutter Bin® stormwater filtration system. You are well on your way to a cleaner world.

The goal of this manual is to communicate effectively and efficiently the process of fitting up and installing the Mundus Bag. OK, let's get your mind into the gutter...

Steps to fit-up a Mundus Bag:

1. Unroll the bag
2. Bunch the bag at desired bag closure depth
3. Secure the bag closure strap around the bag
4. Position the hoop at the top outside part of the bag
5. Fold the head of the bag over the hoop
6. Seat the hoop
7. Tighten the backflow preventer
8. Record info on the label
9. Place the Mundus Bag into the Gutter Bin
10. Secure with locks (if applicable)
11. Enter data in FAM



Bag and Hoop



Bag unrolled

Mundus Bag Preparation Step by Step

1. Unroll the bag
 - a. Place your thumb in the bag closure loop as you unwrap the bag
2. Bunch the bag at desired bag closure depth
 - a. Ensure the bag closure is at least 10 inches from the bottom of the bag (min. tail = 10")
 - b. Tightly bunch the bag to ensure the closure stays engaged to the bag, and that pollution is not lost.



Tightly bunch the bag together at desired depth



3. Close the bag bottom by securing the bag closure strap around the tail
 - a. Ensure that the hook (orange) and loop (yellow) parts of the Velcro engage with each other.
 - b. Hold the thumb loop against the tail of the bag and wind the bag closure around the tail.
 - c. The yellow loop should be facing toward the bag
 - d. NOTE: for shallower catch basins, the end of the bag may be trimmed off. The MB should not be so long that it can block the outlet pipe.



Hold the thumb loop against the bag. Tightly wrap the strap around the bag with loop engaging with hook velcro



Place the hoop on the outside head (top) of the bag.

4. Position the hoop at the head and outside part of the bag
 - a. Place hoop within top 2-4" of the head
 - b. The bag is on the INSIDE of the hoop



Roll the head of the bag over the top of the hoop so that the bag is inside the hoop and thick shock cord is outside the hoop

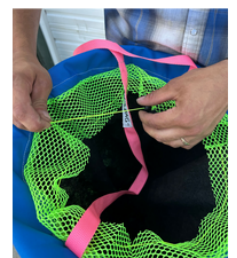
5. Fold the head of the bag over the hoop
 - a. The elastic shock cord will roll over the head



Pull the head and tail away from each other to seat the hoop

6. Seat the hoop
 - a. Hold the head, put your foot on the tail, and pull apart to see the hoop in the head of the bag

7. Tighten the backflow preventer (BFP)
 - a. Pull the thin shock cord while holding the cord lock until the backflow preventer covers half the bag inlet
 - b. The BFP will help prevent the loss of floatable pollutants



Pull on the thin shock cord and cord lock to constrict BFP



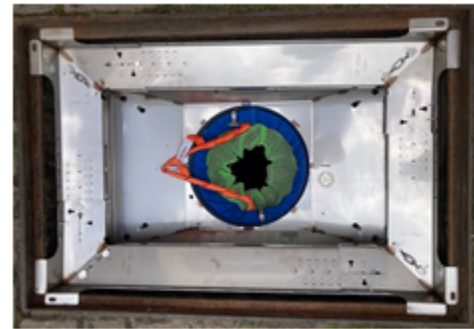
8. Record info on the label
 - a. Write the date of install and any other info you prefer on the label at the head of the bag

9. Place the Mundus Bag into the Gutter Bin

- a. Clean the receiver of debris so the bag fits flush within the Gutter Bin.
- b. The Mundus Bag hoop fits directly into the Gutter Bin receiver
- c. Make sure the bag is flat and level



10. Secure with locks (if applicable)
 - a. Install the vacuum truck friendly (VTF) locks if a provided.
 - b. Loop the handle(s) over the cleat to secure the bag.
 - c. If there are two handles, then it is a VTF model. Twist the handles 5-7 times and then secure to the cleat. This will help keep the handles out of the way when the vacator truck hose inserts for cleaning.



11. Enter data in Field Asset Manager (FAM)
 - a. If you do not have access to the Frog Creek FAM, then please contact us.
 - b. instructions for the FAM are found on the [Frog Creek website](#).

You did it! Well done.

CUSTOMER SUPPORT

Need help? Contact us:

Call: 307-797-7720

email: support@frogcreek.partners

website: <https://frogcreek.partners/support>

Scan: QR code **update**



You will find instructional videos, technical documentation, specification sheets and product briefs.

We are here to support you 24/7/365.

