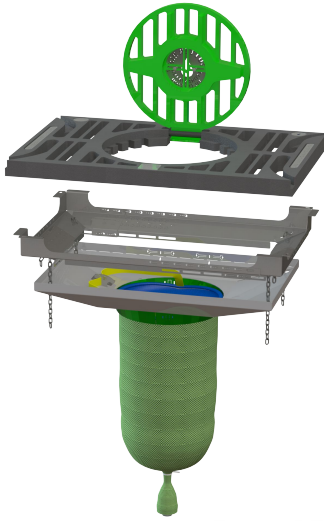


Original Gutter Bin (OGB)

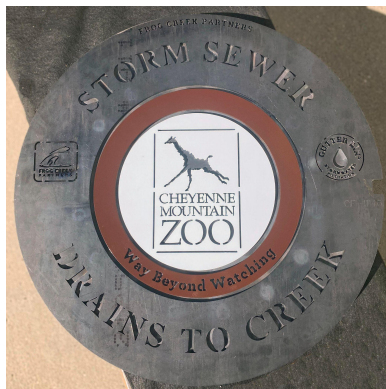
Gutter Bin® stormwater filtration system



Original Gutter Bin

Install & Service

- Clean in 2 min or less by hand or machine (confined space entry not required)
- Service 1-4 times/yr depending upon environment and filter option choice
- Installs in 15 minutes or less
- Compatible with retrofit and new build
- No drilling or special tools required



Cheyenne Mountain Zoo custom manhole cover



800 West Yellowstone Hwy
Casper, Wyoming 82601 USA
307.797.7720
heya@frogcreek.partners
<https://frogcreek.partners>
DUNS #: 080457762 | CAGE: 7RLA3

CERTIFIED:

- ✓ Full Trash Capture (CA)
- ✓ Vector Control Accessible (CA)
- ✓ Temporary Erosion Control (WA)

The OGB customized grate offers unique branding opportunities in storm drains. The OGB integrates with the Mundus Bag® water filter to remove trash, microplastics, sediment, oils, greases, nutrients, and heavy metals thereby helping protect and restore ecosystems.

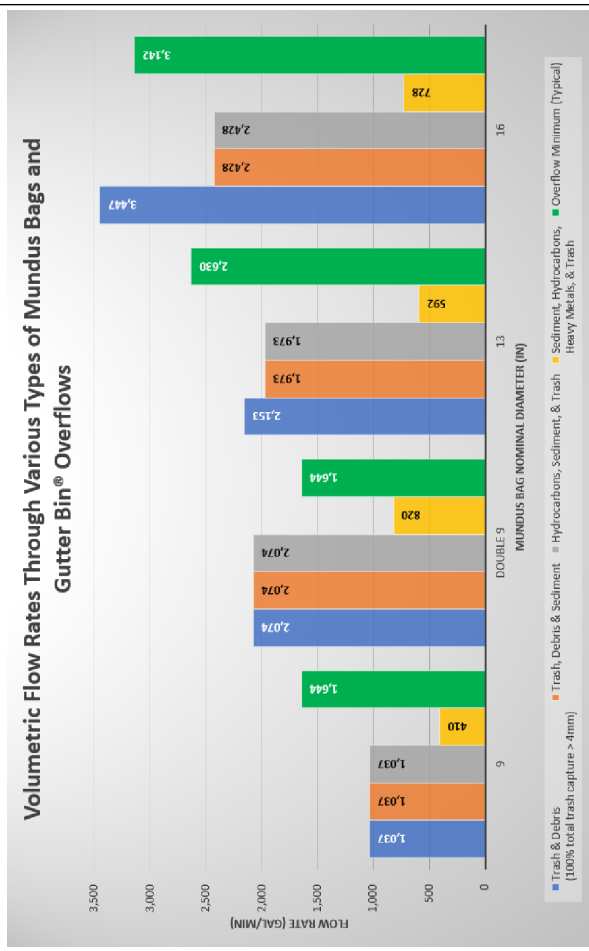
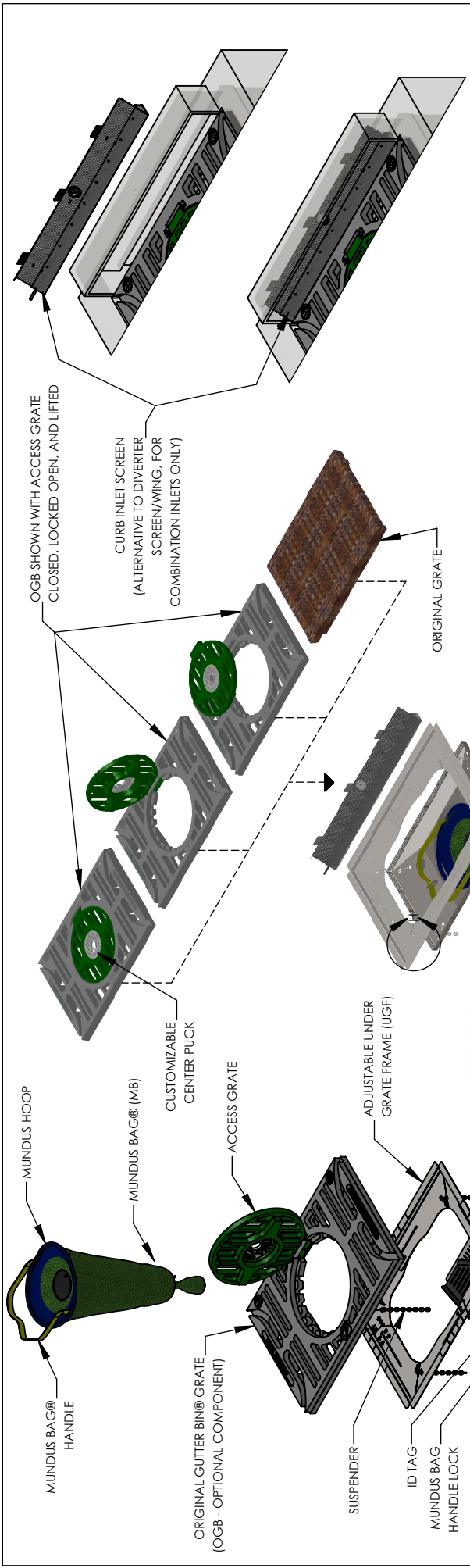
Product Features & Benefits

- Highly visible customized grate design affords the client unique branding opportunities in the community
- Functional art that helps beautify development projects, parking lots & other public gathering areas.
- Aligns well with corporate environment, social & governance (ESG) initiatives
- Original Gutter Bin grate made for your location with custom sizing, logo, and branding
- Built to fit round, square & rectangular storm drains
- Access hatch is hinged for quick service & lockable
- Largest adjustable overflow on the market
- Stainless steel filter component construction
- Engineered for HS-20 load rating
- High quality USA construction with 3-year warranty
- Public Private Partnerships thru donated Gutter Bins

Customized designs available for sponsorship



Meijer Superstore OGB



CONFIDENTIAL PATENT PENDING
SHEET 1 OF 1

FROG CREEK PARTNERS
FROG CREEK PARTNERS, LLC
800 W. Yellowstone Hwy
Casper, WY 82601
Ph: (307) 439-9570
www.frogcreekpartners.com
brian@frogcreekpartners.com

GUTTER BIN®
MUNDUS BAG®
MUNDUS HOOP®

REVISIONS

REV	DATE	INITIALS	DESCRIPTION
1.6.3	11/4/2019	TJS	UPDATE TO PRODUCT MODELS - ADDED DETAIL TO CALLOUTS/NOTES.
1.6.4	11/4/2019	TJS	RE-ARRANGED VIEWS, UPDATED CHART, ADDED NOTES.

DIMENSIONS/TOLERANCES
UNLESS OTHERWISE NOTED:
DIMENSIONS ARE IN INCHES
TWO DECIMAL
THREE DECIMAL
ANGLE

PROJECT
PROJECT REV: 1.6.4
CUSTOMER: [REDACTED]

DRAWING TITLE
GUTTER BIN® ECO DROP INLET FILTER (FOR COMBO INLETS) (DIF-C) PRODUCT DRAWING

DRAWN BY
TJS

CHECKED BY
BRD

DATE
1/14/2019

SCALE
SCALE: 1:16

SIZE
DON'T SCALE DRAWING **A**

